



■ Packing List

No.	Name	Shape	L(m)	B(m)	H(m)	Unit weight (t)	Qty.
11	Transitional section assembly		5.51	1.67	2.45	4.70	1
12	Hook		1.84	0.32	1.83	0.79	1
13	Slewing assembly		4.60	3.77	3.84	10.45	1
14	Trolley assembly		3.27	2.35	1.29	0.72	1
15	Counter-jib sectionI		5.32	1.55	1.02	1.49	1
16	Counter-jib sectionII		6.26	1.55	1.09	1.96	1
17	Counter-jib Section III		7.37	1.51	1.07	2.29	1
18	Basic section		7.81	2.09	2.09	5.22	2
19	Standard section		3.31	2.13	2.13	1.89	14
20	Climbing frame		7.67	2.61	2.91	2.91	1



Hunan SANY Tower Crane Co., Ltd.

No.168, Jinzhou Avenue, Jinzhou Development Zone, Changsha, Hunan, China
 Postcode: 410600
 Service: 0086-400 6098 318 Consulting: 400 8879 318
 Email: crd@sany.com.cn

Reminder:
 For safe and reliable operation of the diesel engines, please fill Grade IV machines with Grade IV diesel and urea solution conforming to related national standards. Please refer to the operating instructions and related standards for details.

Any change in the technical parameters and configuration due to advancement in technology may occur without prior notice. The machine in the figures may include auxiliary equipment. This brochure is for reference only, and goods in kind shall prevail.
 Copyright at Sany Heavy Industry. No part of this catalogue may be copied, recorded or used for any purpose without written approval from Sany Heavy Industry.

© Printed in May 2020 in China

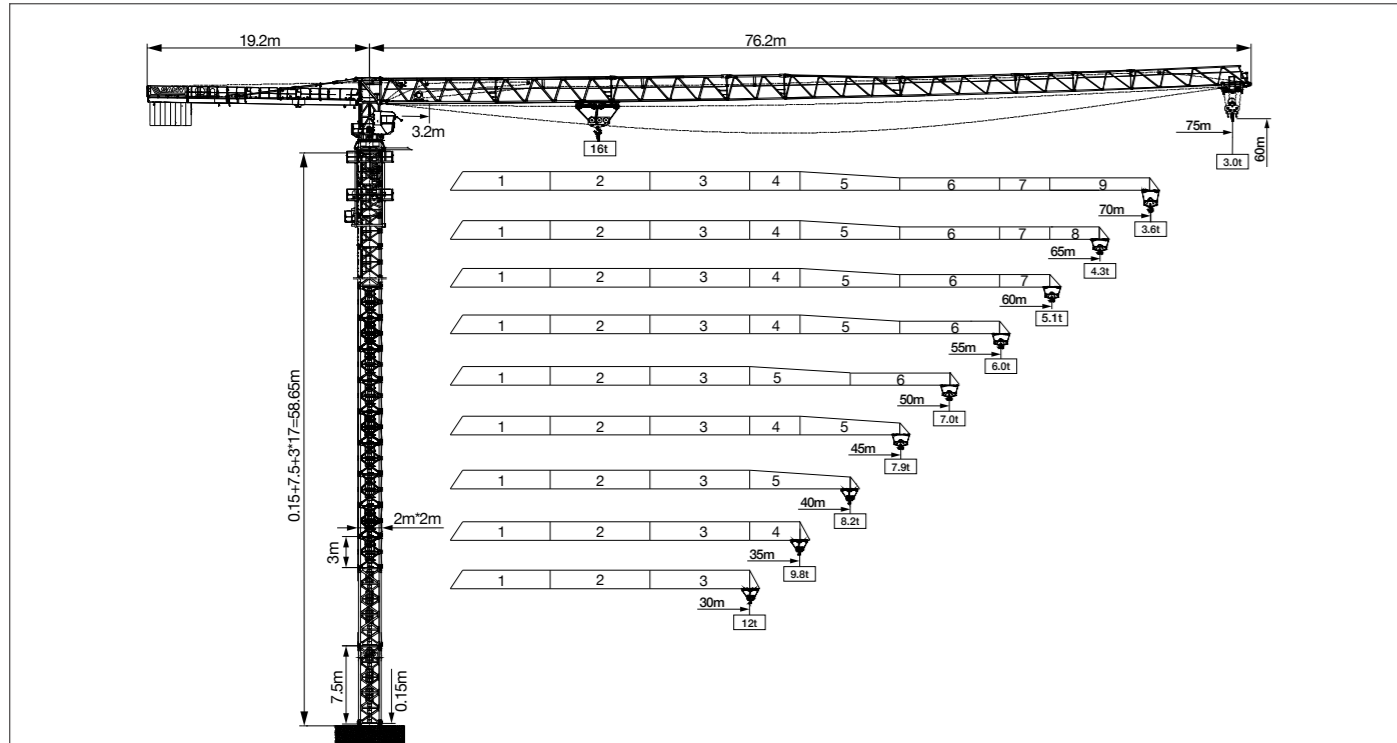
www.sanyglobal.com



SFT315(T7530-16)

SANY TOWER CRANE

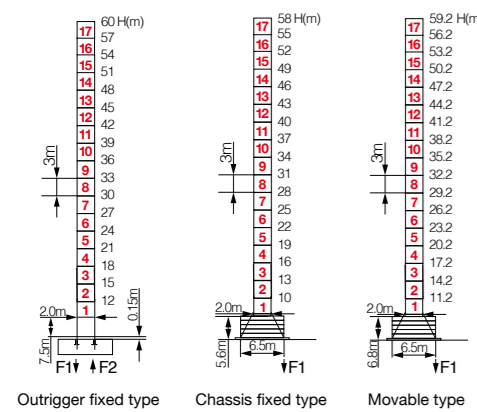
Jib Length & Tip Load



Counter-jib Ballast

Jib length (m)	Total weight of balance jib (t)	3.95t counterweight (block)	2.95t counterweight (block)	2t counterweight (block)
75	25.70	4	2	2
70	24.10	5	1	1
65	24.70	5	1	1
60	23.70	4	2	1
55	21.70	4	2	0
50	19.80	4	0	2
45	18.75	4	1	0
40	15.80	2	2	1
35	14.80	3	1	0
30	12.85	2	1	1

Masts



Outrigger fixed type

F1	Counterforce at working state	208t
	Counterforce at non-working state	195t
F2	Counterforce at working state	144t
	Counterforce at non-working state	139t
Dead weight under condition of independent height and Max.jib length (without counter-jib ballast or load)		86.3t

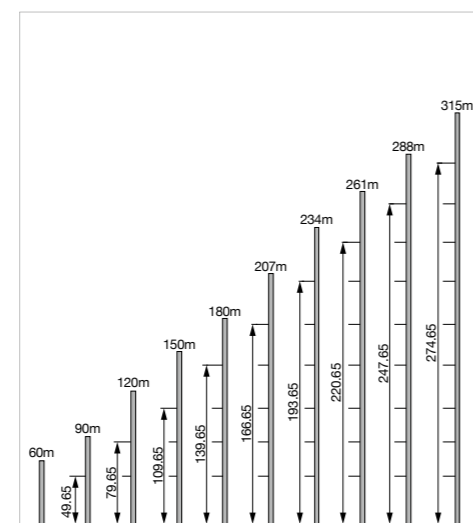
Chassis fixed type

F1	Counterforce at working state	128t
	Counterforce at non-working state	131t
Dead weight under condition of independent height and Max.jib length (without counter-jib ballast or load)		95.4t

Movable type

F1	Counterforce at working state	133t
	Counterforce at non-working state	141t
Dead weight under condition of independent height and Max.jib length (without counter-jib ballast or load)		97.8t

Anchorage

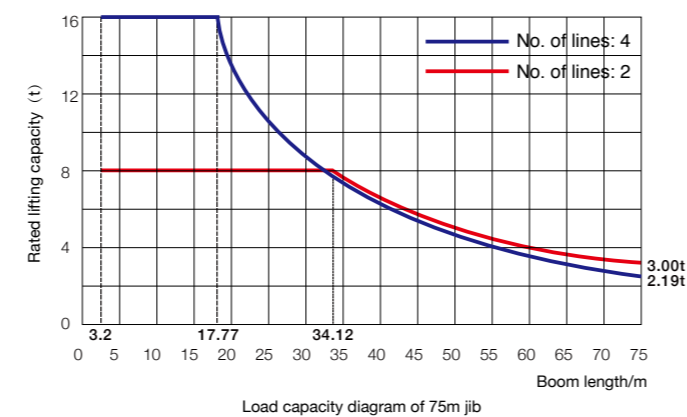


Load Diagram

Range(m)	Max. lifting capacity	3.50	17.00	20.00	23.00	25.00	28.00	30.00	33.00	35.00	38.00	40.00	43.00	45.00
75	3.5m-34.12m/8t	8.00	8.00	8.00	8.00	8.00	8.00	8.00	8.00	7.77	7.05	6.64	6.09	5.76
	3.2m-17.77m/16t	16.00	16.00	13.90	11.76	10.63	9.24	8.47	7.51	6.96	6.24	5.83	5.28	4.95
70	3.5m-36.46m/8t	8.00	8.00	8.00	8.00	8.00	8.00	8.00	8.00	7.62	7.18	6.59	6.24	
	3.2m-18.95m/16t	16.00	16.00	15.01	12.72	11.50	10.02	9.20	8.17	7.58	6.81	6.37	5.78	5.43
65	3.5m-38.83m/8t	8.00	8.00	8.00	8.00	8.00	8.00	8.00	8.00	8.00	8.00	7.73	7.10	6.73
	3.2m-20.16m/16t	16.00	16.00	16.00	13.69	12.40	10.82	9.94	8.84	8.21	7.39	6.92	6.29	5.92
60	3.5m-41.09m/8t	8.00	8.00	8.00	8.00	8.00	8.00	8.00	8.00	8.00	8.00	8.00	7.59	7.20
	3.2m-21.30m/16t	16.00	16.00	16.00	14.62	13.25	11.57	10.65	9.48	8.81	7.95	7.44	6.78	6.39
55	3.5m-43.06m/8t	8.00	8.00	8.00	8.00	8.00	8.00	8.00	8.00	8.00	8.00	8.00	8.00	7.60
	3.2m-22.30m/16t	16.00	16.00	16.00	15.43	13.99	12.23	11.26	10.03	9.34	8.43	7.90	7.20	6.79
50	3.5m-44.58m/8t	8.00	8.00	8.00	8.00	8.00	8.00	8.00	8.00	8.00	8.00	8.00	8.00	7.91
	3.2m-23.07m/16t	16.00	16.00	16.00	16.00	14.57	12.74	11.74	10.46	9.74	8.80	8.25	7.53	7.10
45	3.5m-44.51m/8t	8.00	8.00	8.00	8.00	8.00	8.00	8.00	8.00	8.00	8.00	8.00	8.00	7.90
	3.2m-23.03m/16t	16.00	16.00	16.00	16.00	14.54	12.72	11.72	10.44	9.72	8.78	8.24	7.52	7.09
40	3.5m-40.00m/8t	8.00	8.00	8.00	8.00	8.00	8.00	8.00	8.00	8.00	8.00	8.00	8.00	
	3.2m-22.95m/16t	16.00	16.00	16.00	15.96	14.48	12.67	11.67	10.40	9.68	8.74	8.20		
35	3.5m-35.00m/8t	8.00	8.00	8.00	8.00	8.00	8.00	8.00	8.00	8.00				
	3.2m-23.19m/16t	16.00	16.00	16.00	16.00	14.65	12.82	11.81	10.53	9.80				
30	3.5m-30.00m/8t	8.00	8.00	8.00	8.00	8.00	8.00	8.00						
	3.2m-23.50m/16t	16.00	16.00	16.00	16.00	14.88	13.03	12.00						

Range(m)	Max. lifting capacity	48	50	53	55	58	60	63	65	68	70	73	75
75	3.5m-33.14m/8t	5.33	5.07	4.71	4.50	4.21	4.03	3.78	3.63	3.42	3.29	3.11	3.00
	3.2m-18.31m/16t	4.52	4.26	3.90	3.69	3.40	3.22	2.97	2.82	2.61	2.48	2.30	2.19
70	3.5m-36.03m/8t	5.78	5.50	5.12	4.89	4.58	4.39	4.13	3.96	3.74	3.60		
	3.2m-19.86m/16t	4.97	4.69	4.31	4.08	3.77	3.58	3.32	3.15	2.93	2.79		
65	3.5m-37.51m/8t	6.24	5.94	5.54	5.29	4.96	4.75	4.47	4.30				
	3.2m-20.66m/16t	5.43	5.13	4.72	4.48	4.15	3.94	3.66	3.49				
60	3.5m-38.98m/8t	6.67	6.36	5.93	5.67	5.32	5.10						
	3.2m-21.45m/16t	5.86	5.55	5.12	4.86	4.51	4.29						
55	3.5m-40.29m/8t	7.05	6.72	6.27	6.00								
	3.2m-22.16m/16t	6.24	5.91	5.46	5.19								
50	3.5m-42.30m/8t	7.34	7.00										
	3.2m-23.24m/16t	6.53	6.19										

Load Capacity Diagram



Transmission Mechanism

Model	Power	Speed		
		No. of lines	Speed(m/min)	
Hoisting	67kW	4	8	40
			4	76
		8	1.85	129
			16	20
	60kW	8	3.7	65
			8	35
		4	4	70
			2	112
8	16	18		
	8	35		
4	4	56		
	Luffing	7.5kW	0-80m/min	
Slewing	2x7.5kW	0-0.7r/min		

Note: please contact the manufacturer when the working rope capacity is more than 630m (6 layers).

Packing List

No.	Name	Shape	L(m)	B(m)	H(m)	Unit weight (t)	Qty.
1	The tip of jib		1.71	0.86	1.36	0.15	1
2	Boom section I		10.26	1.67	2.56	4.84	1
3	Boom section II		10.26	1.46	2.43	3.47	1
4	Boom section III		10.37	1.46	2.48	2.75	1
5	Boom section IV		5.33	1.46	2.45	1.14	1
6	Boom section V		10.28	1.46	2.43	1.67	1
7	Boom section VI		10.23	1.46	1.95	1.30	1
8	Boom section VII		5.18	1.46	1.91	0.53	1
9	Boom section VIII		5.15	1.46	1.88	0.40	1
10	Boom section IX		10.12	1.46	1.88	0.67	1